



CVSi21



CVS-PC

Lombart's CVSi21 And CVS-PC Computerized Vision Systems

Now you have a choice of operating systems when you buy the Lombart CVS computerized vision systems.

The **CVSi21** utilizes the Apple Macintosh computer, renowned for its stability. This all inclusive unit incorporates a High Quality LCD flat panel 21" monitor and CPU in a compact one-piece system that mounts easily to the wall.

The **CVS-PC** utilizes a 23" Dell all-in-one PC and is designed for those who prefer a Windows based operating system in a more economical unit.

56 Button Remote provides direct access to all charts and allows you to rapidly navigate through an infinite number of chart combinations giving

you unprecedented selection, efficiency and control.

Exclusive Software features a wide range of popular optotypes required in today's practice environment. Standard optotypes include: Snellen Letters, Tumbling E, Landolt Rings, Numbers, HOTV, Crowding Bars, Children's Charts, Red/Green Testing, ETDRS and Contrast Testing.

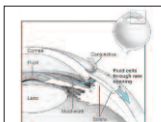
Customize your System by adding your own videos and images for patient education and fixation.

Enhanced Remote Features facilitate operation and include:

- Random Character Generation
- Single Letter Isolation
- Vertical & Horizontal Line Isolation
- 4-Dot & Fixation Tests
- Built-in Video Clips for Child Fixation
- Easy Retrieval of Images for Patient Education



Snellen Chart



Patient Education



Children's Charts



Disparity



ETDRS



Video

(1-800-566-2278)

Call 1-800-Lombart
Or Your Local Lombart Representative.

Corporate Office - 5358 Robin Hood Road, Norfolk, VA 23513-2430
757-853-8888 | FAX 757-855-1232 | 800-566-2278 | 800-446-8092
www.lombartinstrument.com

ATLANTA • BALTIMORE/WASHINGTON D.C. • BOSTON • BOYNTON BEACH/MIAMI • BRADENTON • CHARLOTTE
CHICAGO • CINCINNATI • DALLAS • DENVER • DETROIT • GREENSBORO • HOUSTON • KANSAS CITY • KNOXVILLE • LOS ANGELES
MINNEAPOLIS • NEW JERSEY/NEW YORK • NORFOLK • PORTLAND • SACRAMENTO • SAN DIEGO • SAN FRANCISCO